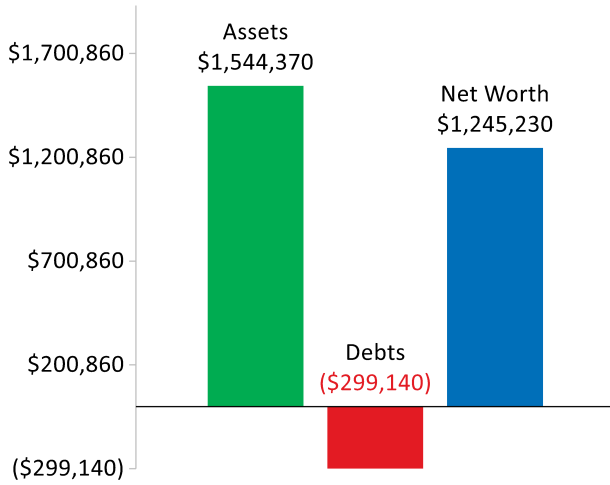


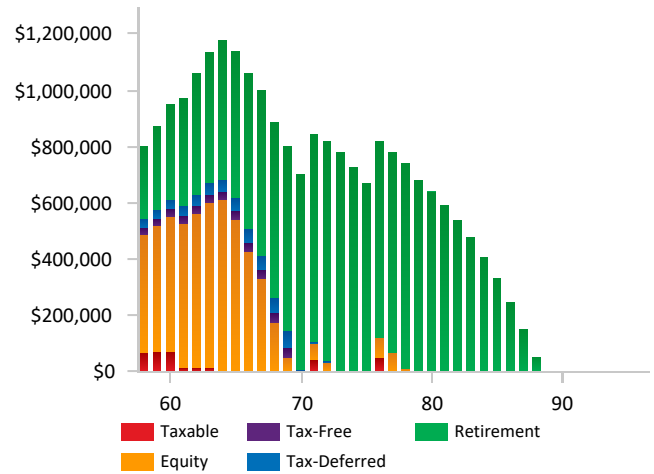


Summary for Allen & Betty Abbett

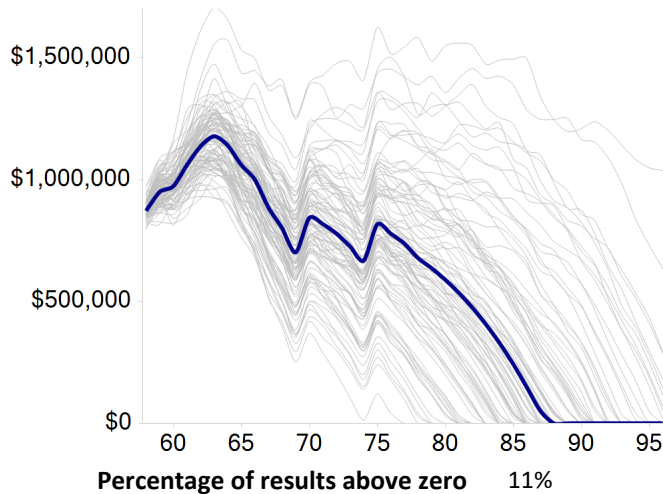
Net Worth



Account Summary



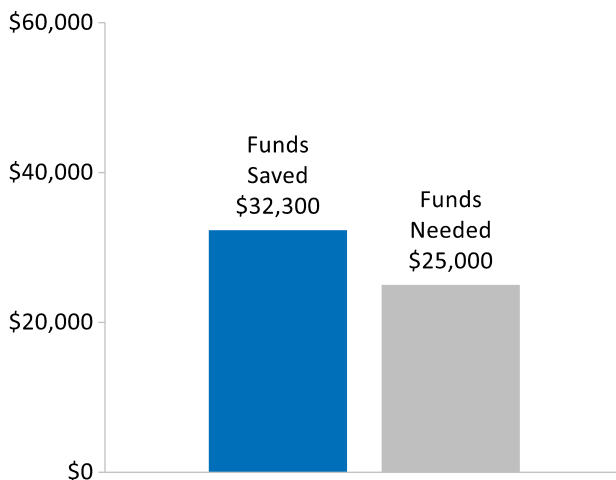
Monte Carlo



Retirement Analysis

Available for Retirement	\$800,990
Capital Projected to Last Until	Age 88
Retirement Need	
Projected Capital at Retirement	\$1,137,071
Needed at Retirement	\$1,336,654
Additional Needed by Retirement	\$199,583
Solutions	
Reduce Retirement Spending by	\$7,000 / yr
Achieve Rate of Return of	7.25%

Education



Action Items

This report is a customizable deliverable that allows advisors to produce a concise analysis for their clients on a single page.

- Include up to 6 modules on the report
- Save module sets to quickly load your favorite modules
- Enter custom messaging with the **Action Items/Custom Text** module