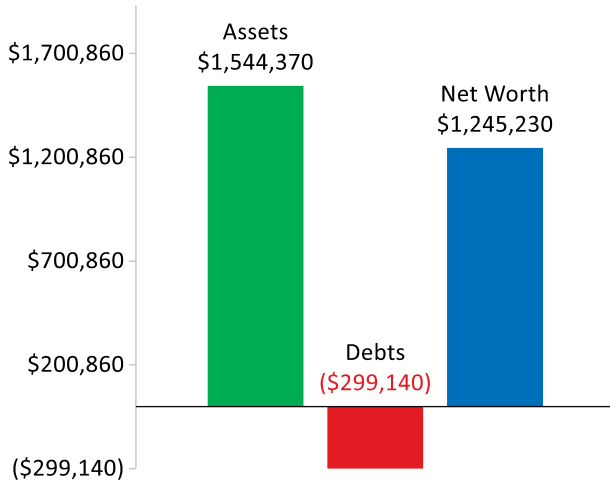


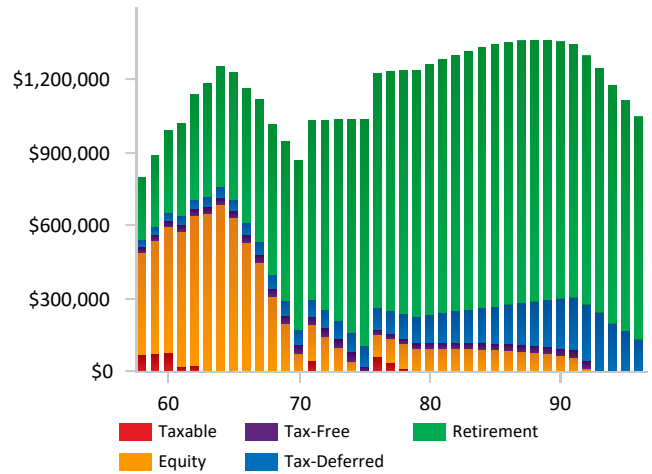


## Summary for Allen & Betty Abbett

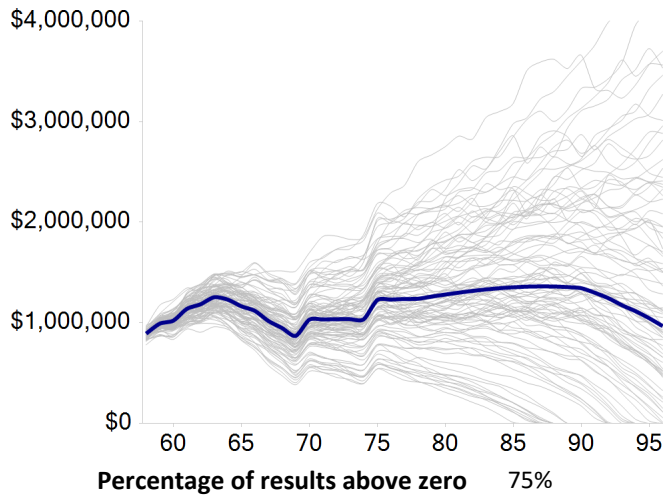
### Net Worth



### Account Summary



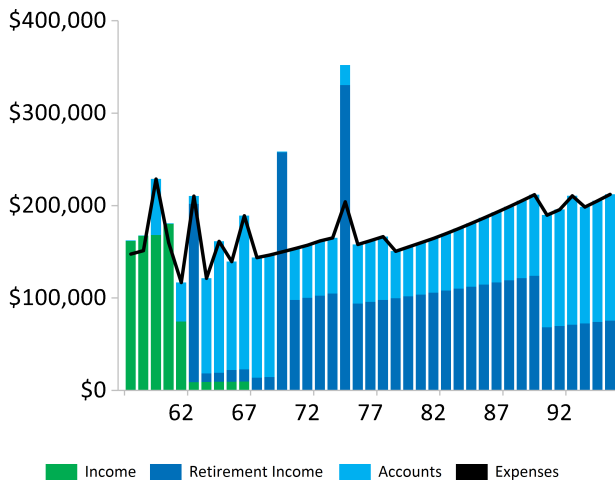
### Monte Carlo



### Retirement Analysis

<b>Available for Retirement</b>	\$800,990
Capital Projected to Last Until	Age 96+
<b>Retirement Need</b>	
Projected Capital at Retirement	\$1,184,305
Needed at Retirement	\$1,059,713

### Cash Flow - Income Sources



### Action Items

This report is a customizable deliverable that allows advisors to produce a concise analysis for their clients on a single page.

- Include up to 6 modules on the report
- Save module sets to quickly load your favorite modules
- Enter custom messaging with the **Action Items/Custom Text** module